

Départ Arrivée

Liaison

Etape 1

Etape 2

Etape 3

1	2	LE FANGU - ND DE LA SERRA 27,53 Km
3	8	ERBAJOLO - PONT D'ALTIANI 24,8 Km
4	6	BARCETTA - LA PORTA 23,26 Km
5	7	TAVERNA - PONT DE CASTIRLA 15,28 Km
9	14	SARROLA - PLAGE DU LIAMONE 26,70 Km
10	12	MARATO - ACQUA DORIA 22,47 Km
11	13	BOCOGNANO - BASTELICA 20,05 Km



RALLYE DES 10000 VIRAGES NATIONAL ET VHC 11,12,13,14,15 Mai 2011



Parc Fermé
Parc Regroup.
Parc assistance

Parc Regroup.
Parc assistance

Parc Fermé
Parc Regroup.
Parc assistance

Départ Arrivée

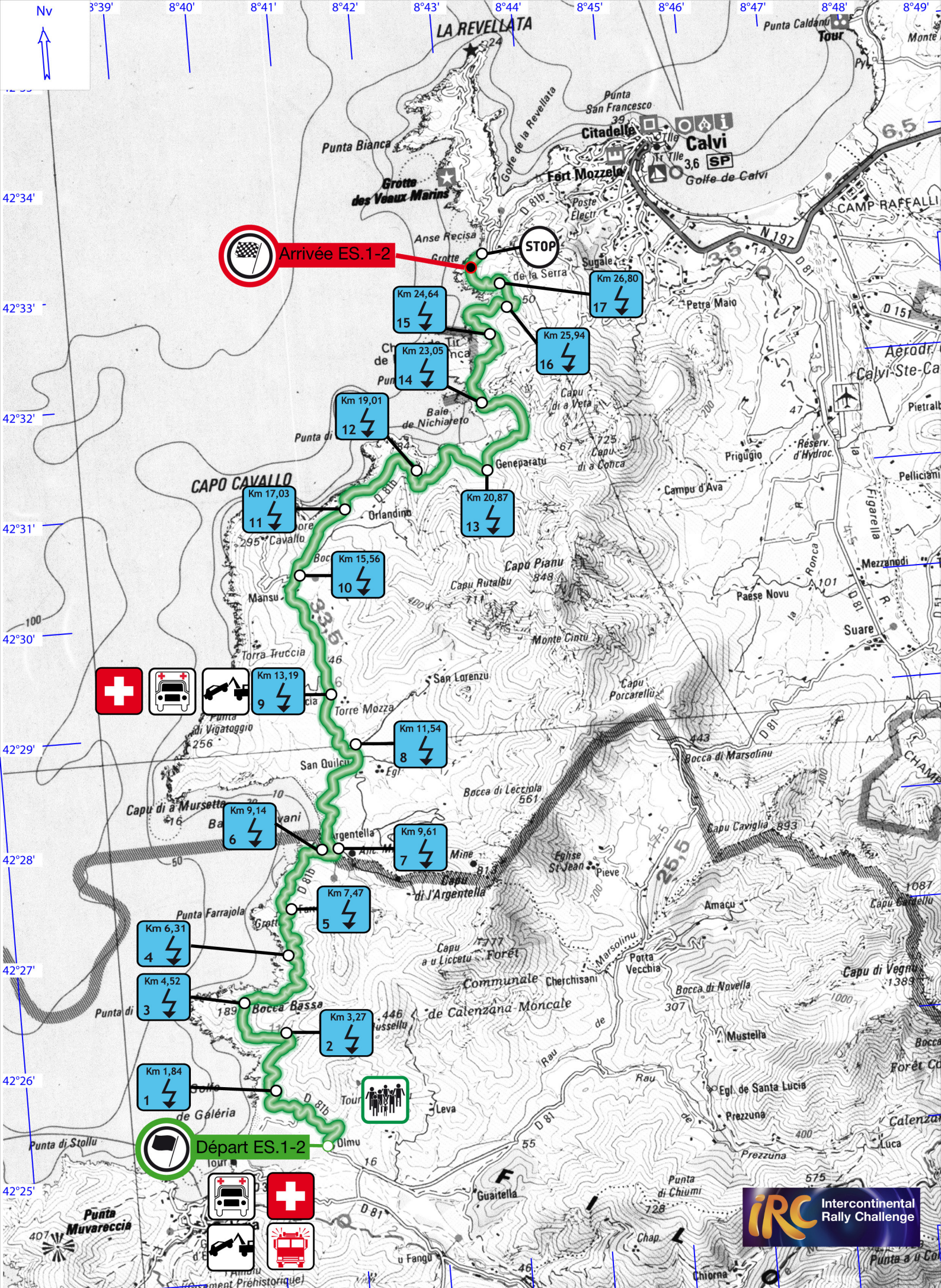
Liaison

Etape 1

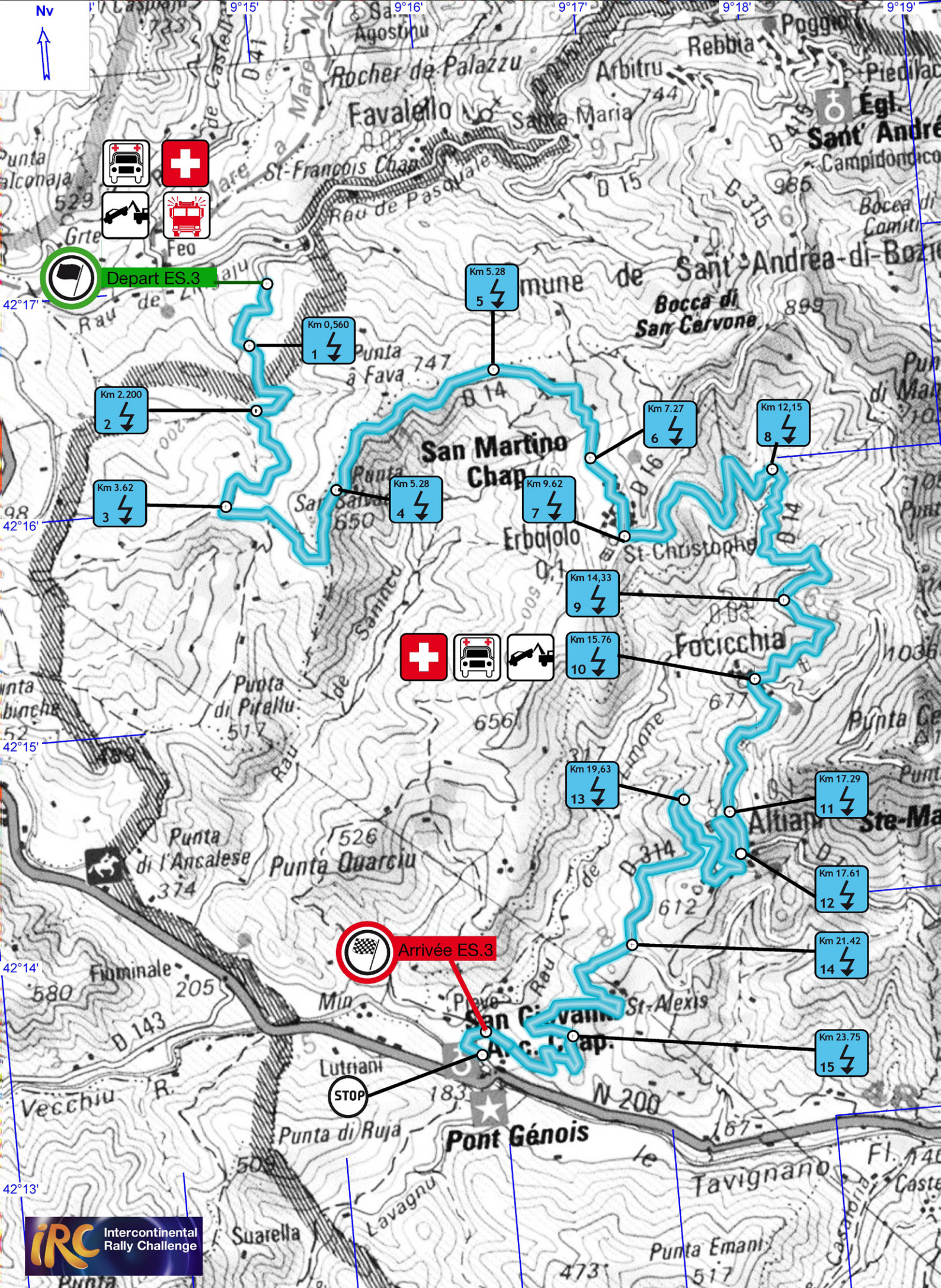
Etape 2

Etape 3

- 2 LE FANGU - ND DE LA SERRA 27,53 Km
- 6 BARCHETTA - LA PORTA 23,26 Km
- 7 TAVERNA - PONT DE CASTIRLA 15,28 Km
- 8 ERBAJOLO - PONT D'ALTIANI 24,8 Km
- 11 13 BOCOGNANO - BASTELICA 20,05 Km
- 12 MARATO - ACQUA DORIA 22,47 Km
- 14 SARROLA - PLAGE DU LIAMONE 26,70 Km

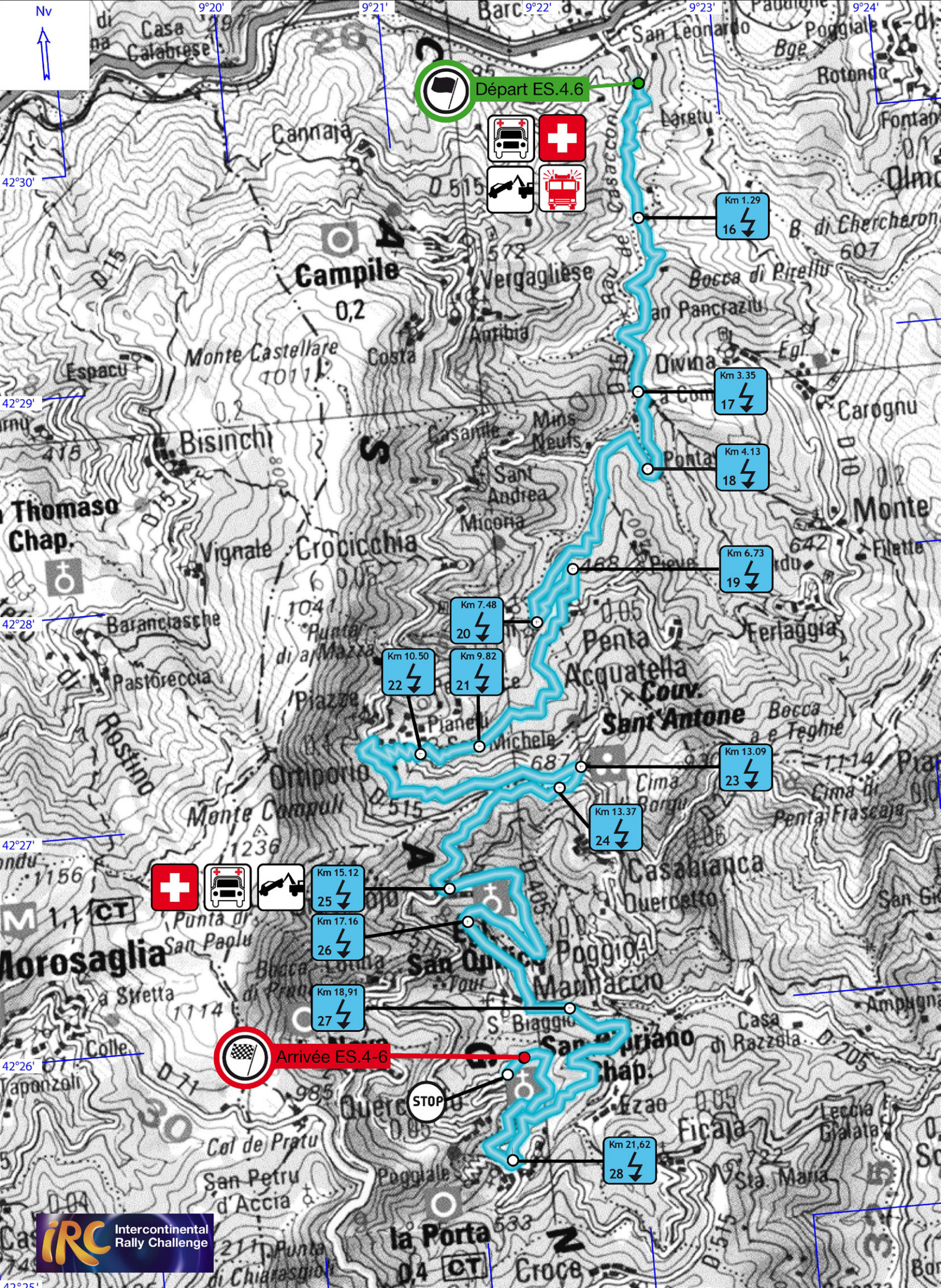


ES 1-2 : LE FANGU - ND DE LA SERRA

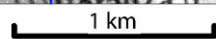


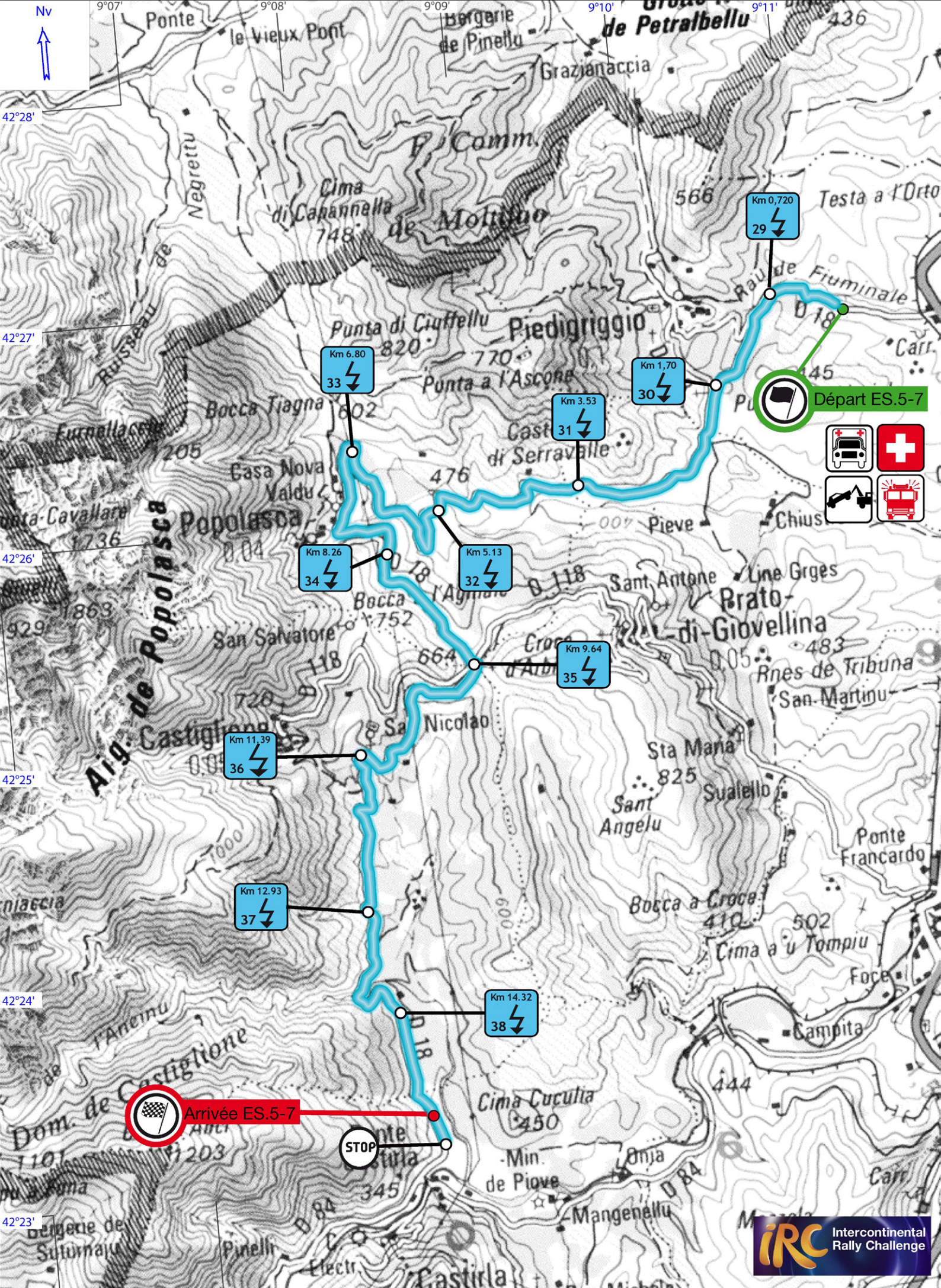
ES 3-8: ERBAJOLO - PONT D'ALTIANI

1 km



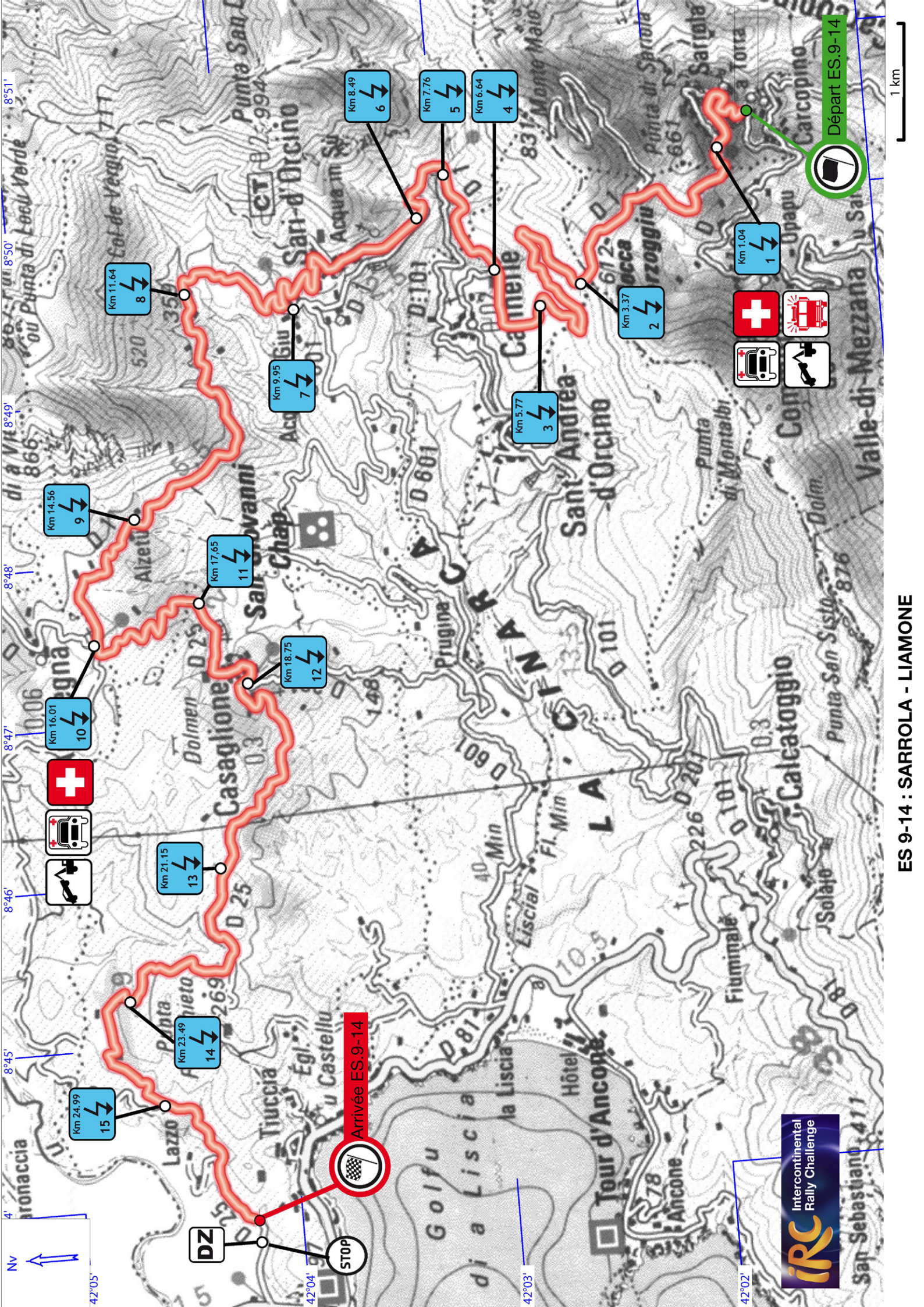
ES 4-6: BARCHETTA - LA PORTA





ES 5-7 : TAVERNA - PONT DE CASTIRLA

1 km



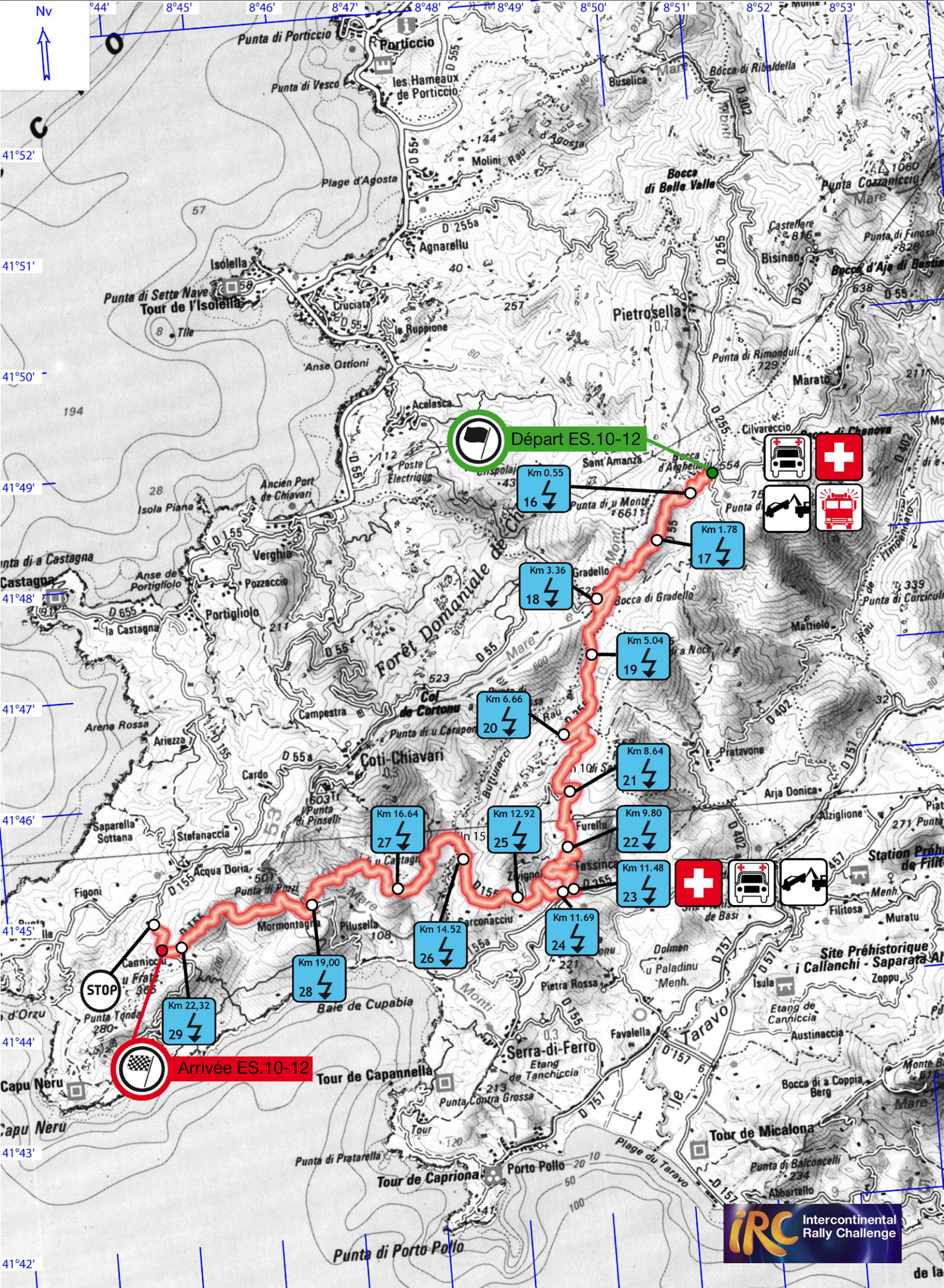
ES 9-14 : SARROLO - LIAMONE



DZ

STOP

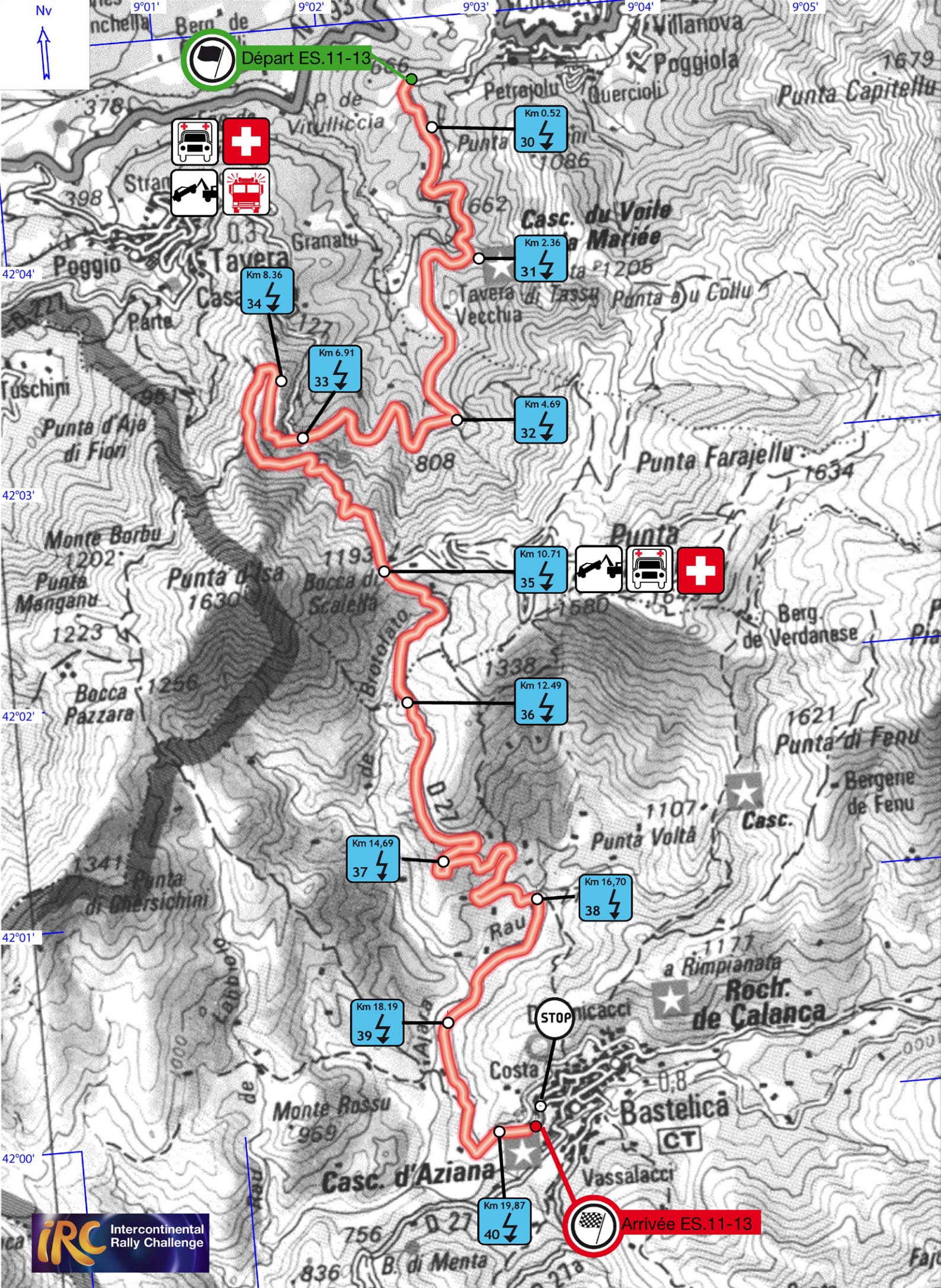
1 km



ES 10-12 : MARATO - ACQUA DORIA

2 km





ES 11-13: BOCOGNANO - BASTELICA

